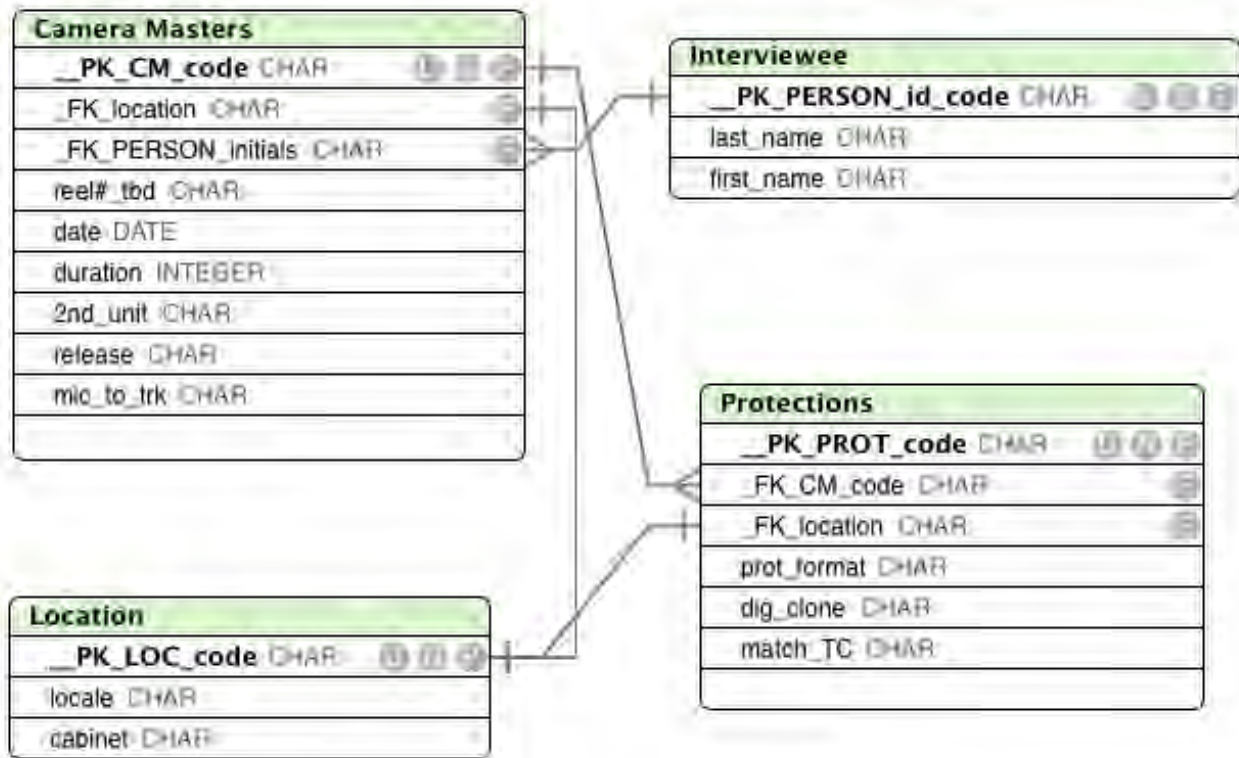


Physical Model for Metadata project (CINE-GT 1803)

Paul Dougherty

"Punk Before Punk" documentary collection. Video interviews with over 40 people recorded between 2000-2003 for a documentary project about NYC "punk" origins.



There are 4 Classes or Tables

Camera Masters - to list raw interview recordings

Interviewee - to list information about each Interviewee

Protection Copies – listed (typically each mstr has several Protection Copies)

Locations – to list all places where tapes may be stored

CARDINALITY - as the Physical Model illustrates there is...

1 Camera Master to many Protection Copies

1 Interviewee can appear in many Camera Masters (and/or Protection Copies by extension)

1 Camera Master to one location

1 Protection Copy to one location

a Camera Master's (many) Protection Copies can be in many locations

in list below PK = Primary Key & FK = Foreign Key

Camera Masters (Class/Table) to list raw interview recordings (in graph called "originals")

__PK_CM_code unique code for every Camera Master (Primary Key)

__FK_PERSON_initials code based on initials of interviewee* FK links to Intv.table

__FK_location code id's location (foreign) key connects to Location table

reel#	series w/in interview session (example 1 of 3 = 1/3)
date	date of interview (W3C date format)
duration	data type Time in FM (no time option in ERD software)
2nd_unit	yes/no (answers was there a “B” camera?)
release	What type of Interviewee “talent” release was used
Mic_to_trk	microphone to audio track assignment

Interviewee (Class/Table) - to list information about each Interviewee

__PK_PERSON_id_initials	Interviewee id initials (Primary Key)
last_name	
first_name	

Protection Copies (Class / Table) - lists all of them, typically each mstr has several PC's

__PK_PROT_code	unique code for every Protection Copy (Primary Key)
_FK_CM_number	code that will connect each PC to each Camera Master(s) (table)
_FK_LOCATION	code id's location (foreign) key connects to Location table
prot_format	format of Protection Copy (PC)
match_TC	yes/no (answers does the timecode on PC match mstr?)
dig_clone	is the PC a Digital Clone?

Location (Class / Table) any given tape (CM or PC) can have only one location

__PK_LOC_code	code for storage location – somewhat human readable (abbrev*)
locale	this would be a place name like “safety deposit box” or apt
cabinet	this would be a storage unit (shelf) in apt w/ name like “wood”

Notes

*Location Code somewhat human readable in so far as locale (place name like “apt” or storage unit) will be abbreviated as “a” or “s” and cabinet will be named “wood” or “white”

Controlled Vocabularies

Value Lists provide predefined values that can be used for data entry, data validation or custom sorting. You can format values as checkboxes, popup lists and so on.

8 items View by: custom order

Value List Name	Source	Values
CM code	From Field	Field: "Camera Masters::__PK_CM_code"
Locations controlled	From Field	Field: "Location::__PK_LOC_CODE"
Init_name controlled	From Field	Field: "Interviewee::__PK_PERSON_id_initials"
format PC list	Custom Values	"MiniDV", "DVCAM", "Betacam SP", "Qt", "DV_file"
boolean	Custom Values	"yes", "no"
release	Custom Values	"old", "primary", "custom"
audio_mics	Custom Values	"standard", "switched", "boom_lav"
locale	Custom Values	"s_box", "apt", "storage"

In the above screen grab, where Source = “From Field” these controlled vocabularies that are derived from Tables - in FM This involves setting the option for the field "Always Validate by Value List" then checkbox "Member of Value List" that can come from a field in another table. Here's it's codes that id Interviewee and id (storage) location.

Where above screen grab says Source “Custom Values” these were input by hand and are local vocabularies explained in the Application Profile. In this FM database they appear as drop-down menus and are set to Always Validate to prevent data entry errors.

All my data types are text except for date and duration (time). (In my ERD program, time is not an option so it's integer there. In Filemaker it is set to time)

No fields are repeatable.

notes below repeated from 1st draft submitted

All my camera masters are mini-DVs which is why format does not appear in that table and only in the Protection Copy table.

Following a FileMaker tutorial I saw, all the Key fields start with underscores.

**Should there ever be a duplicate set of Interviewee initials, numbers are added, I still wanted this "code" to be human readable.*

