



Beauty Spots of America

Castle Hot Springs, AZ

Presented by:
Joseph Gallucci,
Siobhan Hagan,
& Rachel Moskowitz

ONE OF THE BEAUTY SPOTS
OF AMERICA.

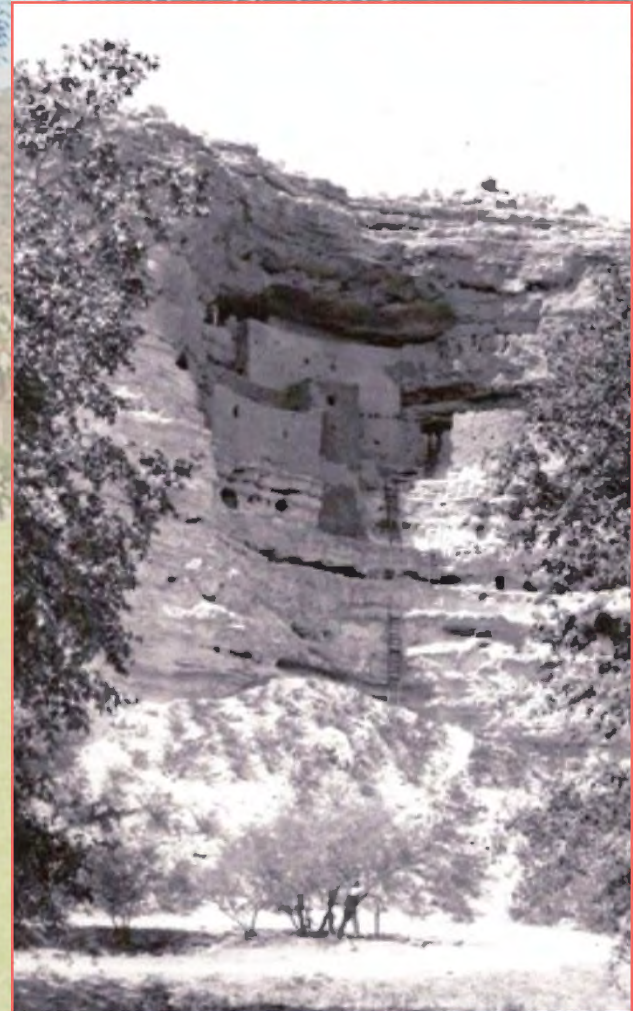
Castle Hot Springs, Arizona,
in the Bradshaw Mountains
between Phoenix and Prescott.

Driving to Castle Hot Springs



Native Americans: Region's Earliest Inhabitants

- Cliff Dwellings
- Montezuma Castle National Monument
- Occupied until roughly 1400 AD
- Contained 20 rooms – space for 50 people



Apache and Yavapai Domain

- Tonto Apaches as well as Wipukepa and Kwevkepaya Yavapai occupied Verde River Valley
- Traded, intermarried, and communicated with one another



Native Americans: Use of Castle Hot Springs

- “Plenty Warm Running Water”
- One of the few locations used for farming
- Sanctuary where rival tribes could rest without fear



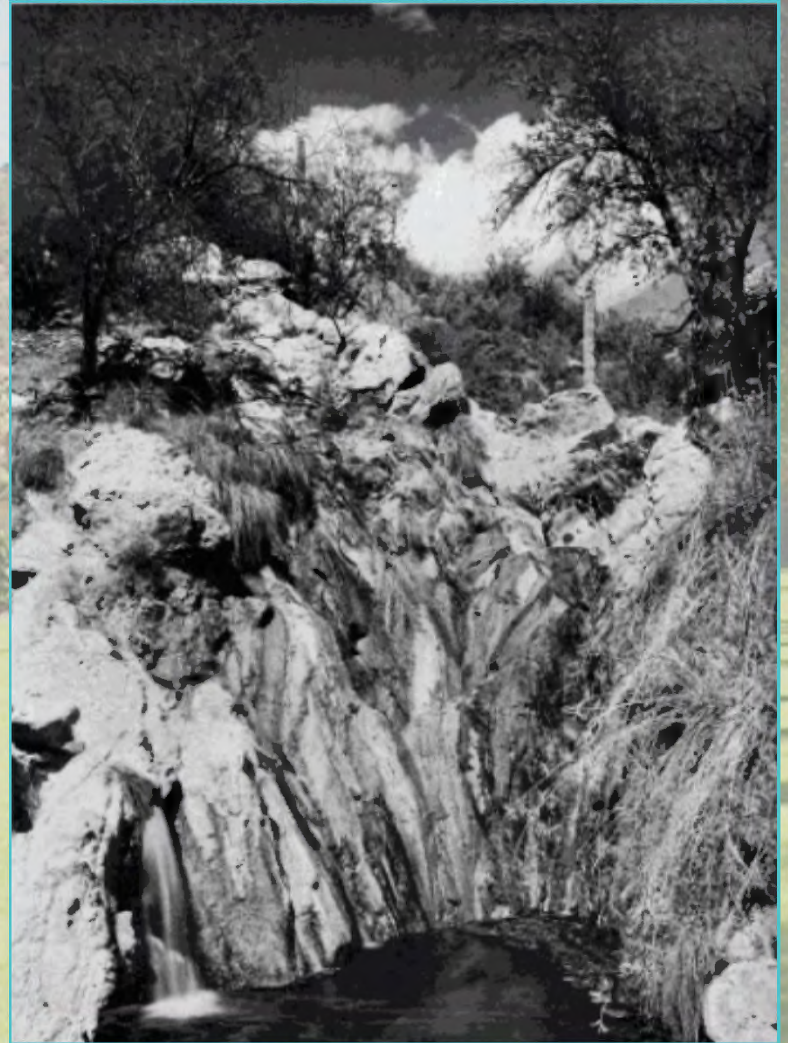
Gold Discovered: Yavapai County

- Gold discovered by 1863
- New threat in the 1860s to Native Americans
- “Beginning of the end”



Castle Hot Springs is Named

- October 29, 1867 – Battle between U.S. soldiers and Apaches
- November 4, 1867 – Discovery of source of springs
- “If we find the headwaters of that creek boys, we’ll call it Castle Springs...”



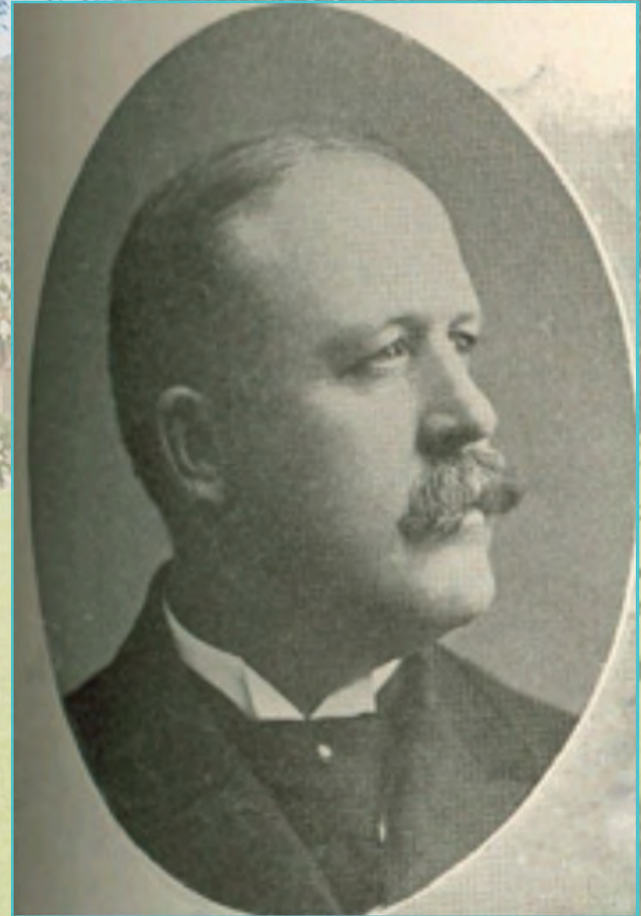
Forced Removal of Natives From Their Land

- 1871 – Camp Verde created
- 1875 – Natives relocated to San Carlos
- 1900 – Allowed to return to Verde Valley



Castle Hot Springs Resort Becomes A Reality

- Property sold to Frank Murphy, though some sources suggest his brother, Nathan Oakes Murphy, might have been the owner
- 1894 – construction began on the Palm House



Railroads to Castle Hot Springs

- Frank Murphy commissioned north-south line connecting Prescott and Phoenix
- Hired Native Americans as laborers
- Eased transportation of materials and personnel



Hot Springs Junction

- Guests to Hot Springs Junction by way of Phoenix and Prescott
- Overnight stay before 24 mile journey to resort
- “The road to paradise is ponderous, perilous and meanly paved.”



The Inn at Hot Springs Junction

- Castle Hot Springs Hotel Company owned the inn at Hot Springs Junction
- Designed specifically for guests traveling to the resort



A "Delightful" Ride

PLAN FOR

A Delightful Motor Trip

TO

CASTLE HOT SPRINGS HOTEL

"The Resort which is Different"

OPENING DECEMBER FIRST

GOLF
TENNIS

SWIMMING
CLOCK GOLF

RIDING
HUNTING

A Charming Trip for the Week End

ADDRESS

E. T. GUSHEE, Mgr.

Hot Springs, Arizona



1645



2183

Landscape Surrounding Castle Hot Springs Resort



Road to Castle Hot Springs



GRAND VIEW ON SCENIC HIGHWAY TO
CASTLE HOT SPRINGS, ARIZONA

Approaching the Resort



Remarkable Natural Resources

- 400,000 gallons of water pump per day
- 90-125 degrees F



Guests Enjoying the Hot Springs



Guests Enjoying the Hot Springs



Women's Bathing Suit Styles: Early 20th Century



- Skirts considered short by traditional standards
- Bathing hats and shoes common
- Sleeves could be long or short

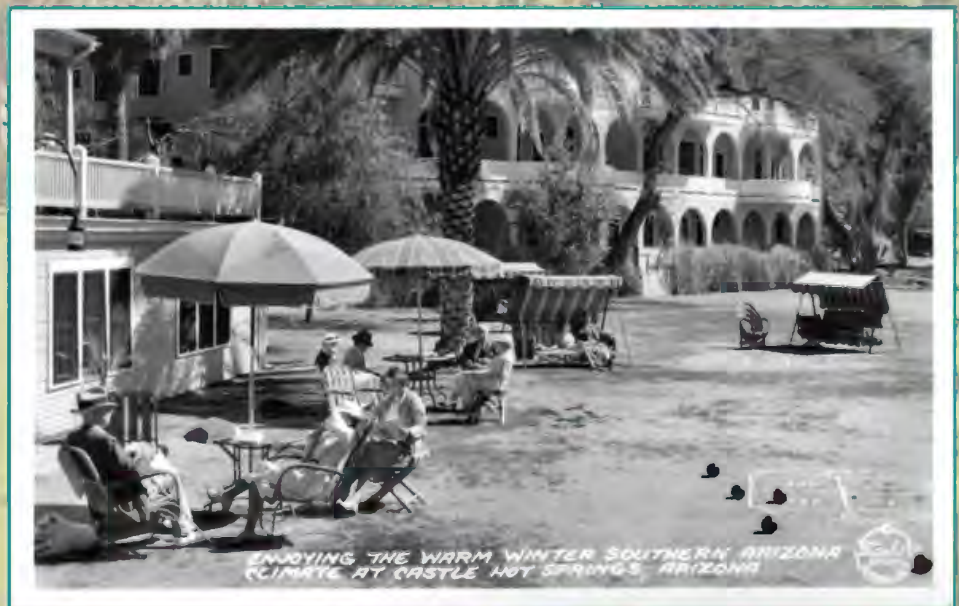
Men's Bathing Suit Styles: Early 20th Century

- Shirts (either short-sleeve or tank) were usually worn together with shorts
- One-piece available



“A Winter Paradise”

- Only for those who could afford the price
- \$3.50 per day in early 1900s
- \$75 per day by 1976



Entertainment and Amusements

- Golf, tennis, horseback riding, quail and dove shooting, shuffleboard



Two perfect courts and well-known professional



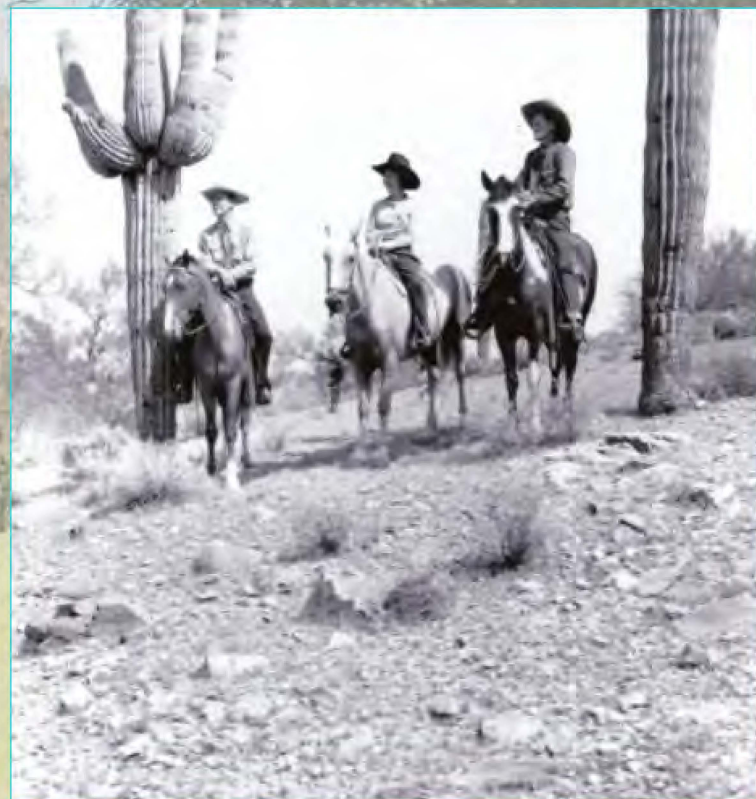
"Chef's on it" and it's the world's best barbecue.



And in the event they're missing out



Soak up the sun (it's crazy back here)



The Palm Court and House

- Designed as a temporary structure
- Maybe used as sanitarium building
- Experienced numerous renovations
- First commercial building in AZ with telephone line

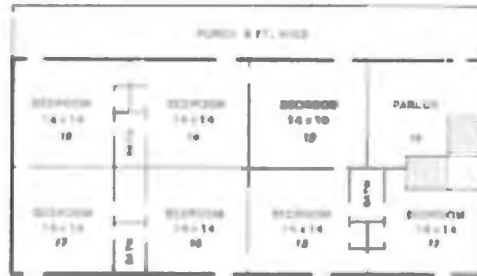


Interior of the Palm House

- Ultimately used as main building on property – included dining room, music room, kitchen, and grill



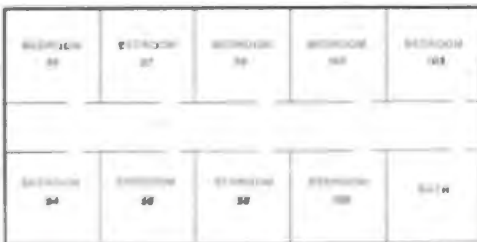
Floor Plans and Layout



GROUND FLOOR OF STONE HOUSE
100 YD. TO STONE ROAD



FLOOR PLAN SECOND STORY STONE HOUSE



SECOND FLOOR



FLOOR PLAN FIRST STORY PALM HOUSE



GROUND FLOOR SECOND STORY PALM HOUSE

Stone House

Palm House

Ads for Castle Hot Springs

Castle Hot Springs

Mountain, Arizona



Arizona's legendary canyon runs its shores as an elegant Club Residential Community offering exceptional ownership opportunities on a limited basis.

For an illustrated full color brochure including site plans, bungalow models and floor plans, please call:

(414) 224-9456

or write:

Castle Hot Springs Associates
c/o TMB Development Co.
c/o E. Wisconsin Avenue
Minneapolis, WI 55422

Listen to the Quiet (after a busy Holiday)

Here, in a remote, palm-shaded valley in the picturesque mountains of central Arizona, Castle Hot Springs reigns as the queen of desert resorts. Just as she has for 78 years. Where the native quail say Good Morning. And the hot bubbling mineral springs are the loudest sound you'll hear all day. Unwind. Relax. Renew. Enjoy tennis, golf, riding, hiking, swimming or just sunning in the clear, warm desert air.

Start your New Year right at America's truly great one-of-a-kind resort. Just an easy hour from Phoenix—but worlds away from a busy life.

Call collect—Area 502—and ask for Castle Hot Springs #1 for reservations. Daily rates begin at \$75—with gourmet breakfast, lunch and dinner included.



Winter home for the fortunate few—since 1916.
Executive seminars welcome.

RELAX
in the sunny
Southwest
this winter!



FOR THE WARM DESERT
COUNTRY ROUNDABOUT

Phoenix and Palm Springs

Effective December 1st, 1941
...and daily thereafter
during the winter season
... there will be through
Pullman service on the
streamlined Santa Fe CHIEF
between Chicago, Kansas
City, and Phoenix, William-
sburg, and Castle Hot Springs
in Arizona's Valley of the Sun.
And the CHIEF, the SUPER.

CHIEF, and other fast Santa
Fe transcontinental trains
linking Chicago and Los
Angeles, will continue to
provide swift service to San
Bernardino, California, for
Palm Springs and Arcadia,
Inland Springs, and to other
many spots in Southern
California for the annual
all-winter Sun Festival.

California's Sun Festival

The Sun Festival... a program
of over 300 events of
seasonal interest, from No-
vember to April... offers you
new and different things to
enjoy every day in Southern
California this winter.

Climate your vacation...
relax and forget your
troubles... by joining in
the fun at several of the Sun
Festival events this winter!
Just call us today, or drop in,
for a Sun Festival program.

G. E. BAYNE, Gen. and Pass. Dept.
500 Penn. Ave., NEW YORK, N. Y.
Phone: PL 6-6070

Sunny days and
bluest of skies—

Southern Arizona



- In Salt River Valley, near Phoenix, oranges and ostriches neighbor the cactus and mosquito.
- Brilliant sunshine is the rule, all winter.
- The desert's dry air is balmy and beneficial.
- Your auto cuts up the magnificent distances.
- A land of intense color—purple peaks, yellow sands, green of irrigation, and gorgeous sunsets.
- It is Egypt, at your very door.
- Hotels and bungalows comfortably care for the traveler.
- Camps, too, where you may "rough it."
- Castle Hot Springs is a noted resort, with hot medicinal waters.

May I send you our
California tour booklet?

Geo. C. BAYNE,
Gen. Pass. Dept.
217 and 513 Broadway,
New York City
Phone: PL 6-6070
1940 and 1941

easily reached enroute to
Grand Canyon and California

Famous U.S. President Visitors c. 1916



Herbert
Hoover



Warren
Harding



Woodrow
Wilson

Henry Frick?



Castle Hot Springs Today



The Essanay Film Co.



The “S” and “A” of Essanay



George K. Spoor



Gilbert M. Anderson

- George K. Spoor, producer/film equipment distributor
- Gilbert M. Anderson, actor/director

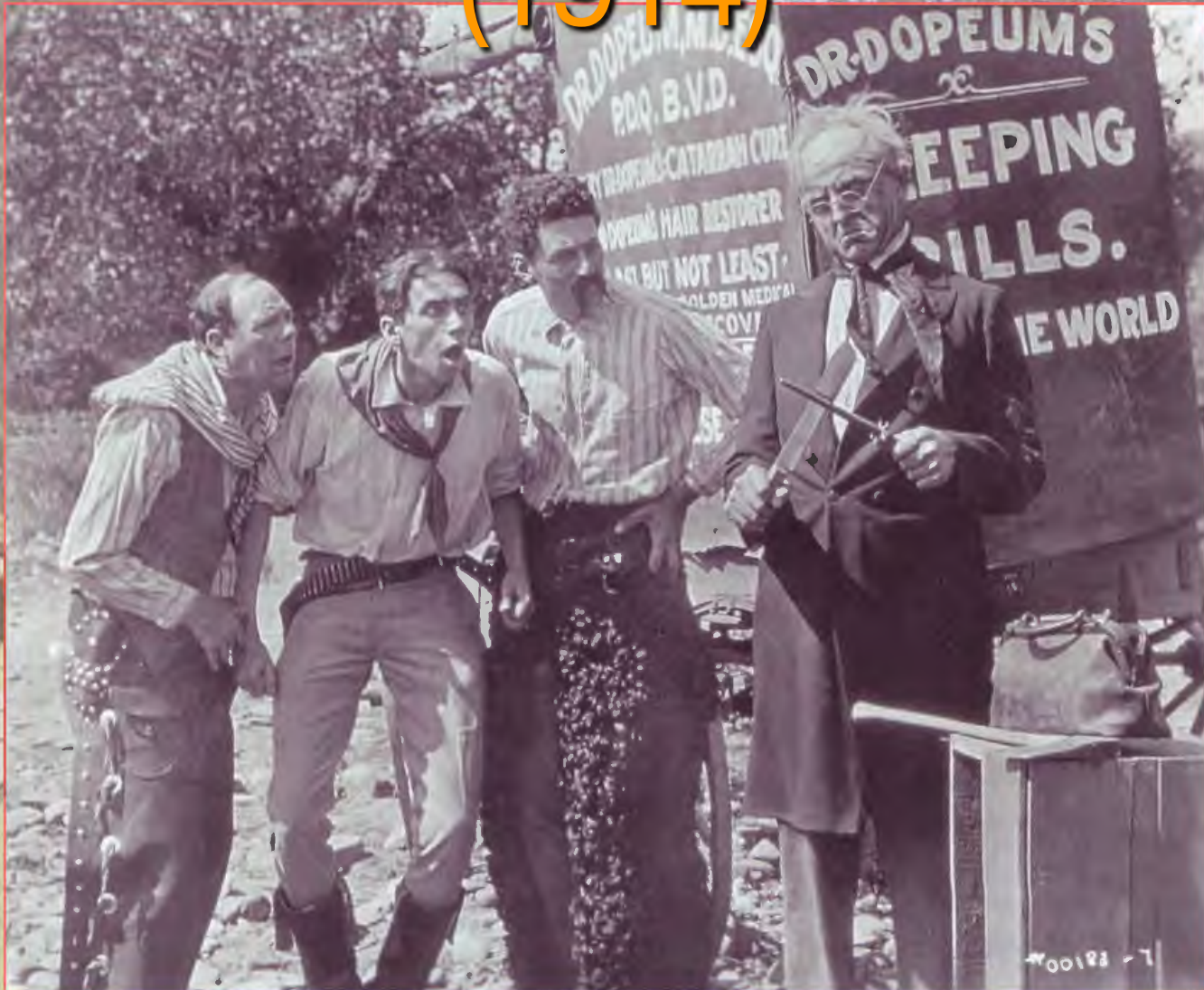
Anderson and his Alter Ego, “Broncho Billy”

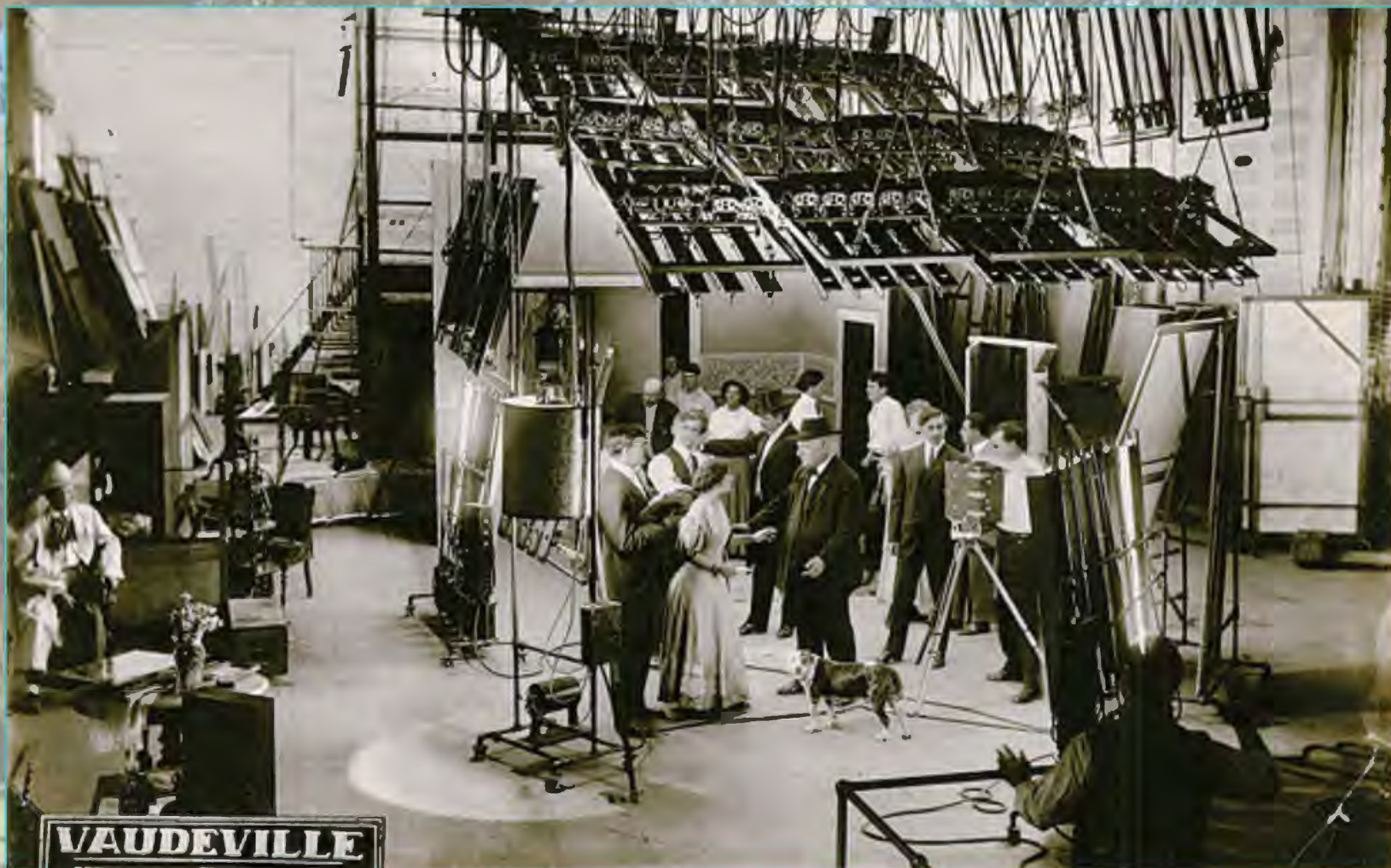




A scene from *Broncho Billy and the Outlaw's Mother* (1913)

The Awakening at Snakeville (1914)





On set at Essanay Chicago



Niles
Train
Depot

Niles
Canyon





**Western Essanay Construction,
ca. 1909**

Ben Turpin



Wallace
Beery

Francis X.
Bushman



Essanay Actors

Gloria Swanson



Edna Purviance

Charlie Chaplin



- Born in London 1889
- Joined Essanay in 1914
- Made 14 photoplays with Essanay

:: Essanay-Chaplin Revivals ::

Charlie's New Job.

Two Reels.



CHARLIE, out of work, spins that one so handsome and accomplished should do well as a film-actor. Light-heartedly he tries off to better his attractions with a Producer.

In the waiting room the eccentric antics of another applicant leave Charlie unmoved, but a comely cutely maiden passing through, pierces his indifference.

Summoned to the inner sanctum, Charlie lithely enters—over the body of his fallen rival. To the manager he suggests a twelve-months' contract as Star instead of that he is offered a job as sub-assistant carpenter. In the studio, the chief carpenter proves a not wholly sympathetic workmate. Charlie naturally indulges his preference for film producing, but the camera man fails to appreciate Charlie's artistic efforts.

The leading man is dismissed and the rehearsal promises to become a failure. Charlie, always willing to oblige, offers to fill the gap. In military attire, hastily donned, the ex-assistant carpenter dashinglv twirls the stage. What though the scenery collapses, if built against: Charlie becomes the mainstay of the piece. He declares his passion for the heroine in true Chaplin style. Meantime the producer goes mad!

It is, perhaps, kinder to skin lightly over the painful incidents that follow. With deep regret Charles reproves his jealous colleagues and drives home gentle reminders—with the aid of a coke hammer. So we leave him—the curious yet mournful victor!

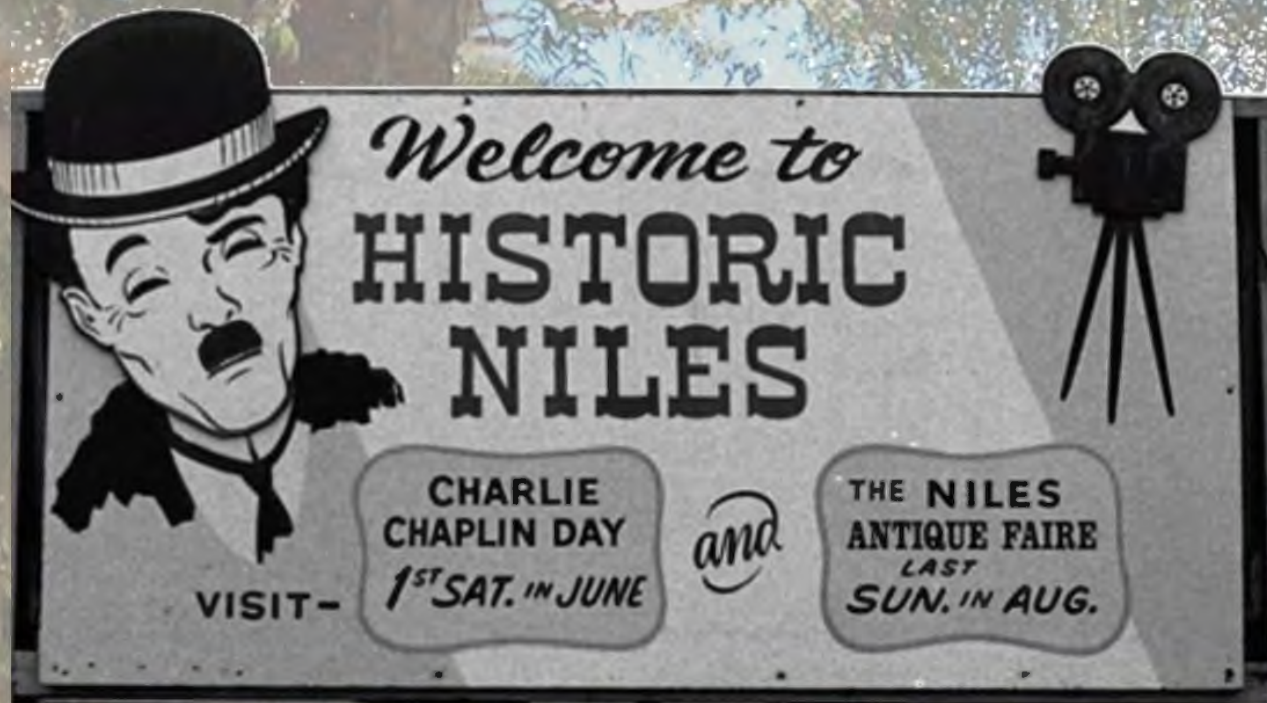
F.B.O

F.B.O

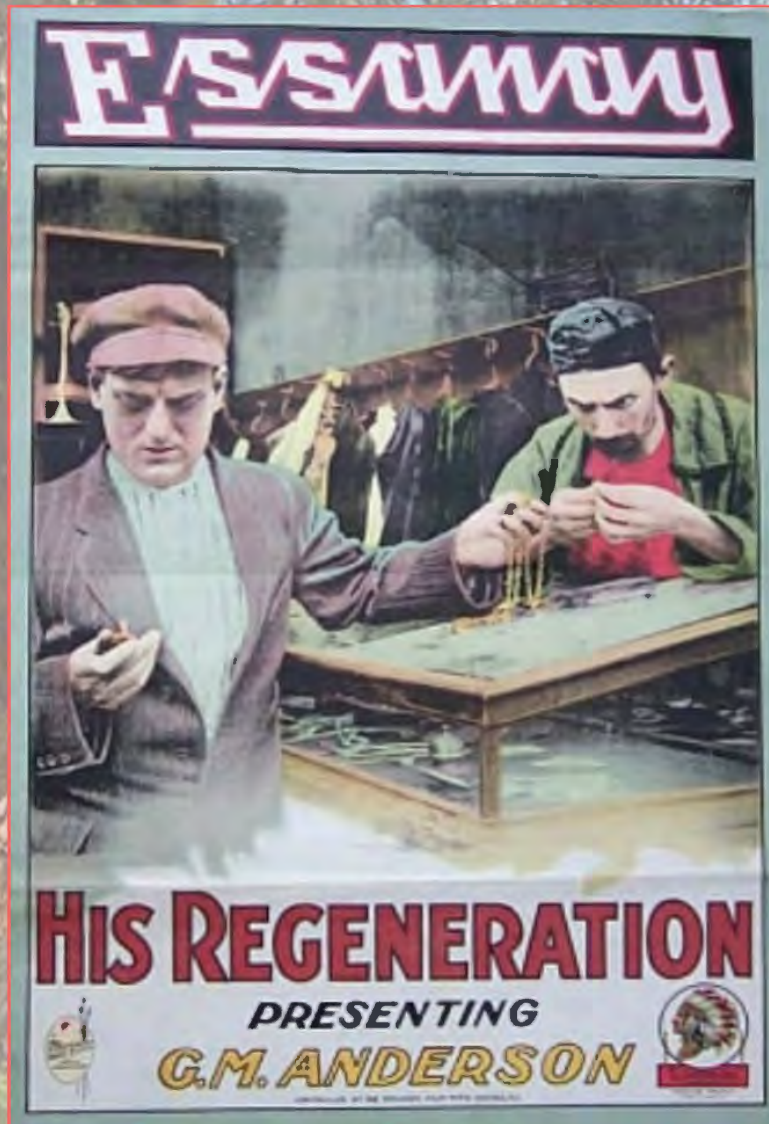
*His New Job, Chaplin's First
Essanay Feature*



Chaplin in *The Champion*



Chaplin as Icon (Billboard in Niles,
CA)



His Regeneration poster (1915)

The End of Essanay

- Western Essanay shut down Feb. 1916
- Stopped producing films altogether in March 1918
- 1925 – Niles studio bought by Ed Rose
- 1933 – building dismantled





**Essanay Chicago Building,
ca. 2005**

Charles Pathé

- 1896 : Pathé Frères with Émile Pathé
- Took over Pathé Cinéma



Pathé Frères: Glory Days

- Joinville Studio
- Montreuil Studio



Trade Papers

- NYC Clipper 1906
- Views & Films Index 1907

280 THE NEW YORK CLIPPER. MAY

PATHE FILMS
 CLASS A. 12 Cents Per Foot.
 COME AND LOOK AT OUR ORIGINAL FILMS AND YOU WILL NEVER BUY "DUPES."

ORIGINATORS OF THE BEST FILMS.
 Something New Every Week.

WRITE FOR NEW CATALOGUE WITH 250 ILLUSTRATIONS. PATHE CINEMATOGRAPH CO., 42 E. 23d Street, New York.

ALL OUR FILMS TAKEN WITH RED TITLES AND SHOW OUR TRADE MARK.

SELLING AGENTS, KLEINE - OPTICAL CO., 55 State Street, CHICAGO, Ill.

WILES BROS., 124 Third Street, SAN FRANCISCO, Cal.

PATHE FILMS
 One Price 12¢ per foot One Quality

ONE NOVELTY FOR EACH DAY
 IN THE WEEK

1. TRAGIC RIVALRY	295 feet	\$35.40
2. WONDERFUL FLAMES (hand colored)	245 "	45.72
3. AMATEUR PHOTOGRAPHER	245 "	29.52
4. HERRING FISHING	656 "	78.72
5. GOLDEN BEETLE (hand colored)	164 "	35.08
6. JAPANESE WOMEN (partly colored)	410 "	54.95
7. BOXING MATCHES IN ENGLAND	410 "	49.20

AND

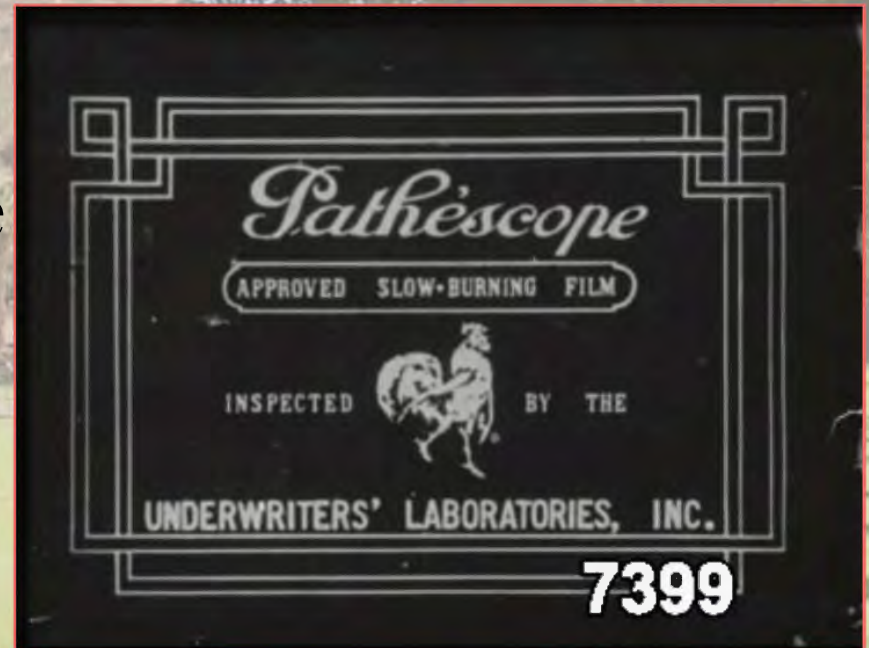
THE LIFE AND PASSION OF CHRIST
 ENTIRELY NEW. RICHLY COLORED
 4 PARTS 89 PICTURES

WE DO NOT RENT FILMS
 DESCRIPTIONS INSIDE

NEW YORK 60 N. 6th Street. **PATHE CINEMATOGRAPH CO.** CHICAGO: 26 Randolph Street

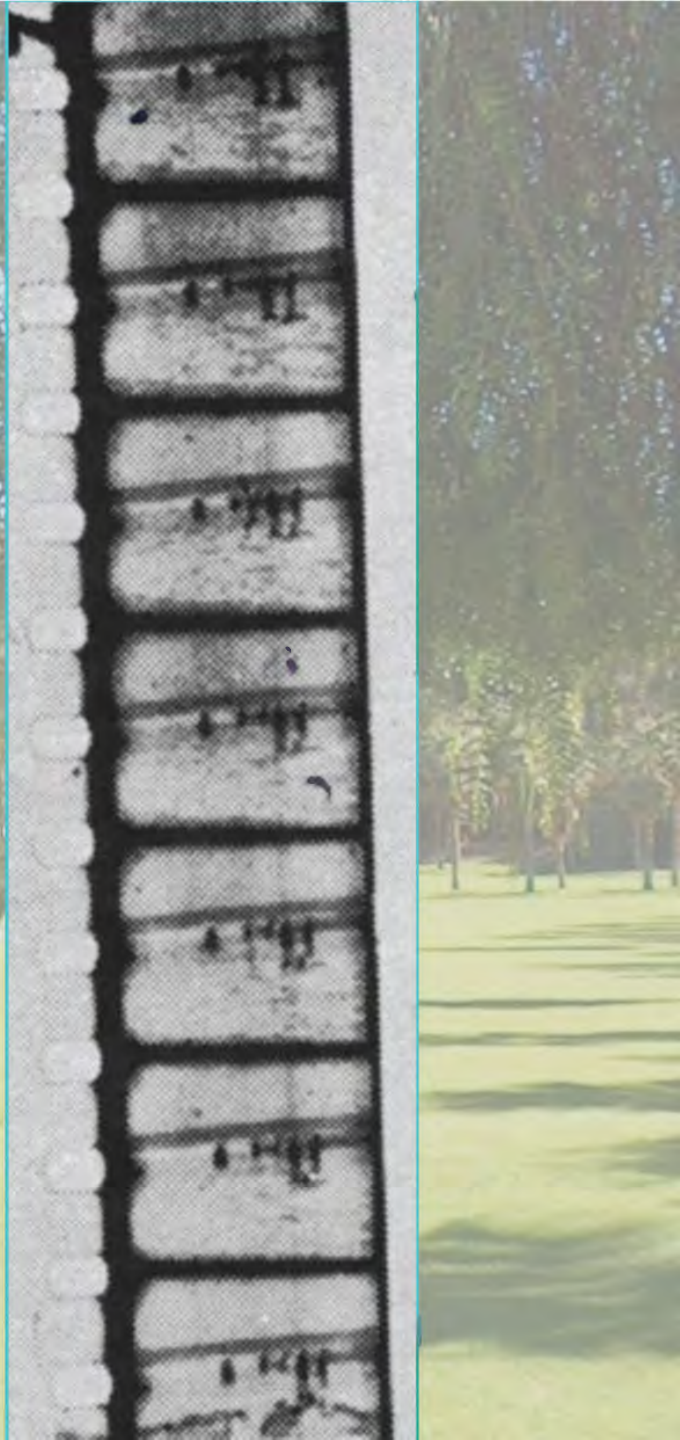
Pathé Frères

- Trademark = Rooster
- 1905 Pathécolor
- 1909 Pathé Gazette
- 1912 Pathéscope
- Stopped producing films in 1920



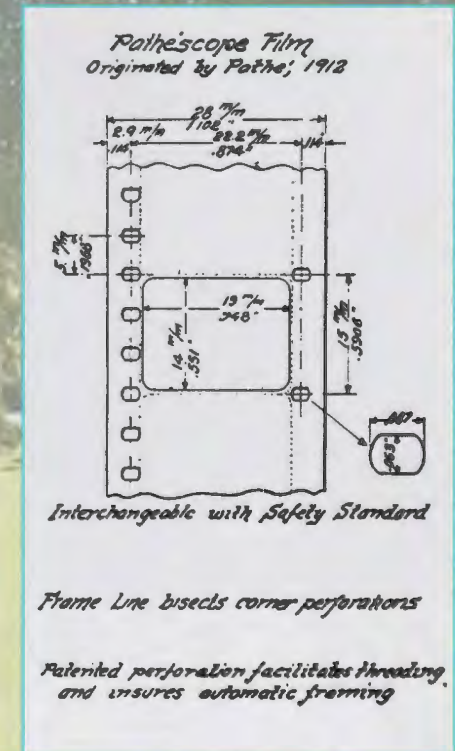
Birtac

- 17.5mm: made by slicing 35mm in half
- Perfs on one side
- 1898
- Amateur film stock
- Nitrate



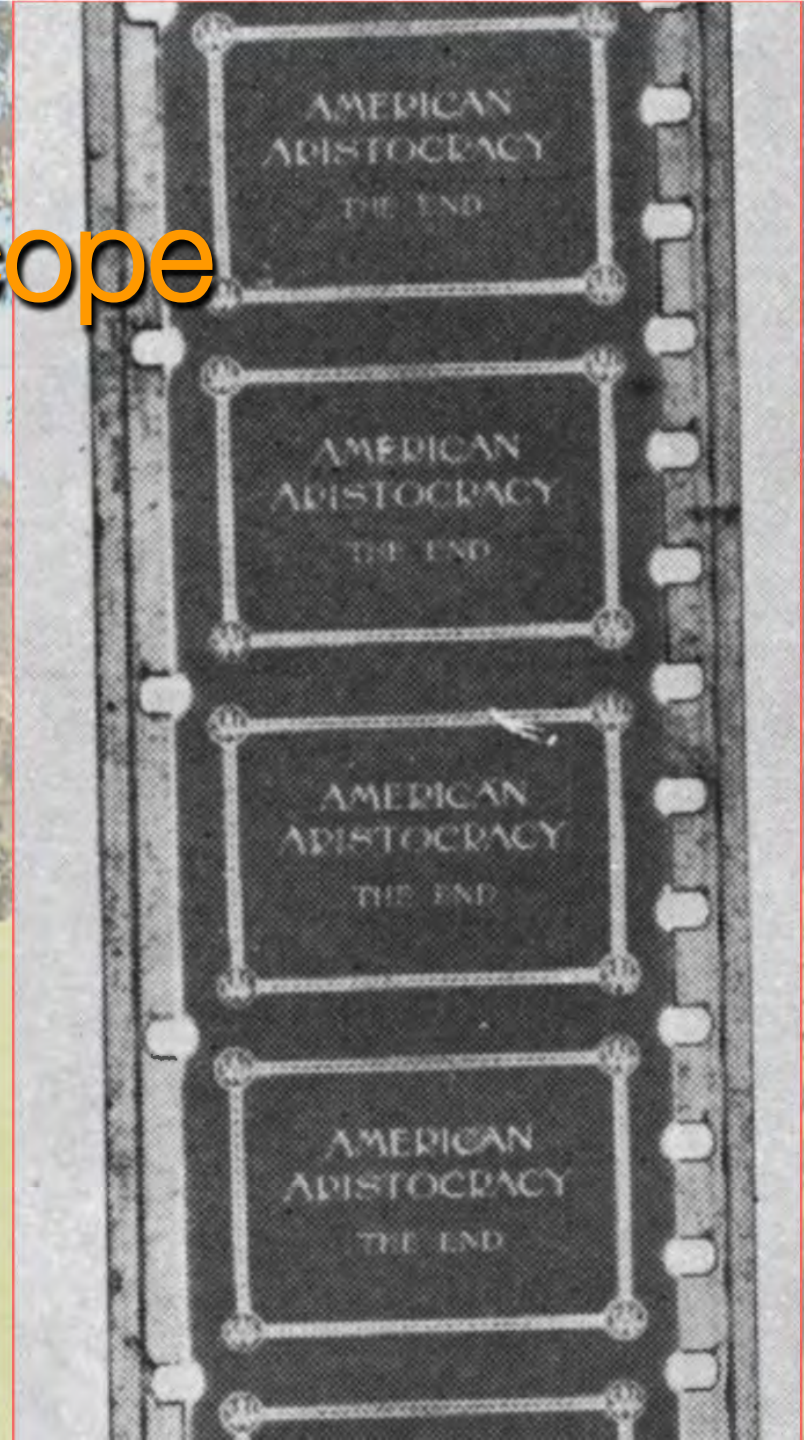
Pathéscope

- 1912
- Nitrate negative
- Acetate positive
- Portable equipment



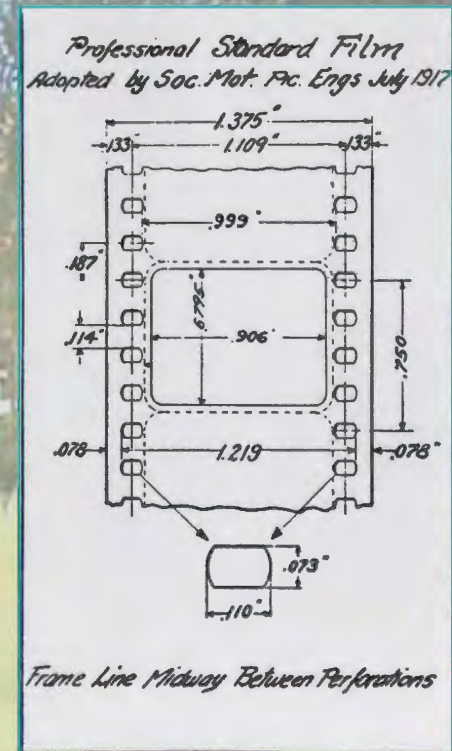
Pathéscope

- Perfs guarantee other formats cannot be played in projector
- Forces to thread the correct way



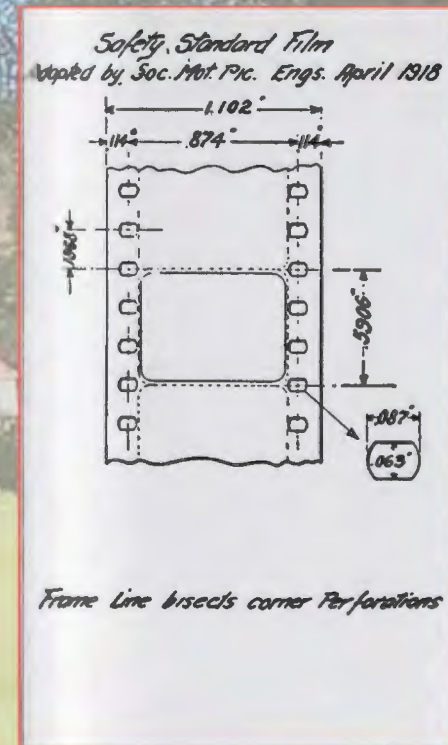
Professional Standard Film

- Professional standard by the SMPE
- 1917



Safety Standard

- All 28mm standards can be played in Pathéscope projectors
- Safety standard by SMPE
- 1918





Reversal Study

- Funded by Kodak
- 1914-16, 1919-22
- Negative direct to positive
- Cuts cost of negative-print process by 1/6

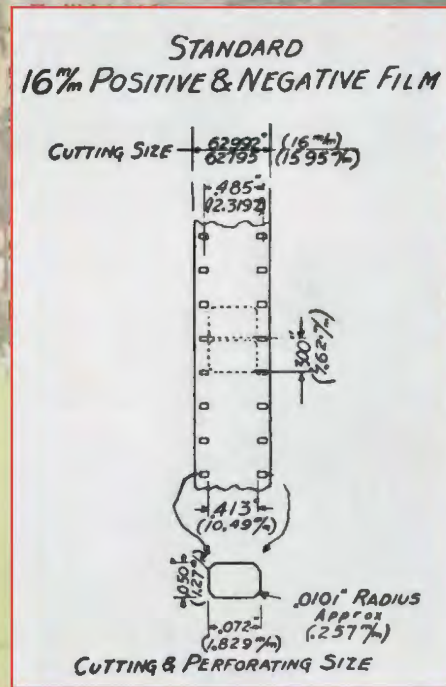
Reversal Study Results

- Reversal study camera 1920-22
- Pathé stops making 28mm 1922
- Eastman's Cine-Kodak System 1923



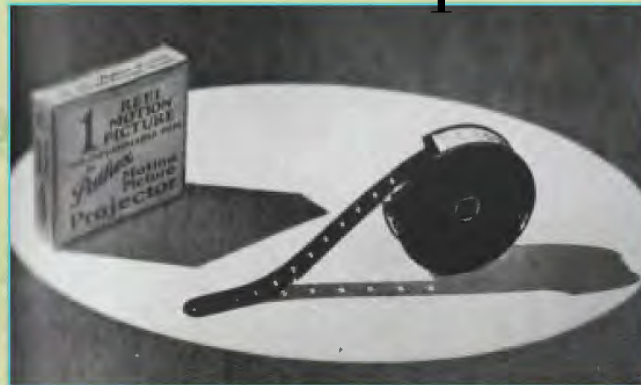
16mm Standard

- 16mm became the amateur filmmaking standard
- SMPE 1928

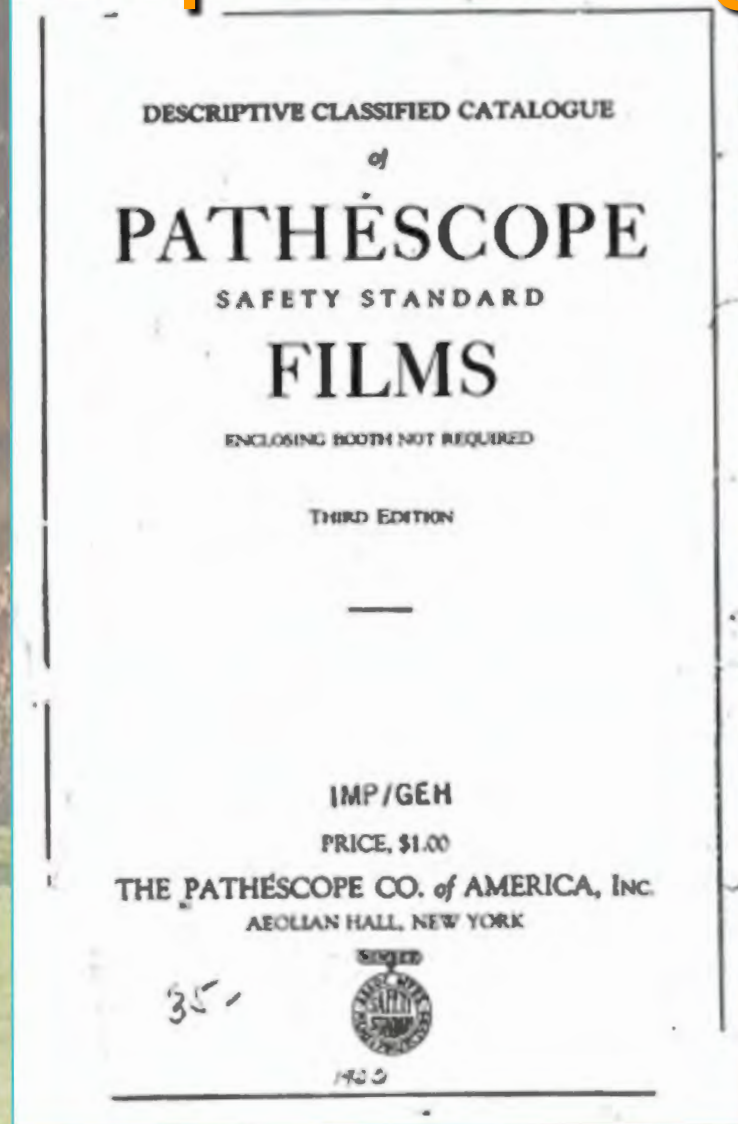


Pathex introduced

- AKA Baby Pathé
- 9.5mm
- 1922
- Perf in the middle allowed more room for image
- Reduction prints



Pathéscope Catalog 1922



Pathéscope Catalog, 1922

- Describes *Beauty Spots in America* and Castle Hot Springs
- Producer = Essanay

CLASS 1—Travel, Sports, Manners and Customs 41		
REEL NO.	TITLE	PRODUCER
A-58	Pathéscope Periodical No. 7	Pathé News
a—The Elephant Butte Dam; b—Coney Island entertains Orphans; c—Demonstration of Combined Harvester and Thresher; d—Visit to Indian reservation; e—Raising Silver Foxes for market; f—"Col. Heeza Liar" in the Trenches.		
A-59	Pathéscope Periodical No. 8	Pathé News
a—Fencing Tournament; b—The Terrapin Industry; c—U. S. Army in Mexico; d—Out-door School for Children; e—Bridge at Topock, Arizona; f—Newark Centennial Celebration.		
A-68	Pathéscope Periodical No. 9	Pathé News
a—New York Mosquito Exterminating Campaign; b—The Largest Locomotive in the world; c—Walnut Gathering in California; d—The Drill at West Point; e—U. S. S. "Nebraska" in Dry-Dock; f—How the Government makes Postage Stamps.		
A-69	Pathéscope Periodical No. 10	Pathé News
a—The Latest in Automobiles; b—Commencement at Vassar College; c—Old Tennessee Trapper—One of the last of his kind; d—Demonstration of Monorail Car; e—Cavalry Manoeuvres in San Francisco; f—How the Government Makes Paper Money.		
A-155	Beauty Spots in America	Essanay
An American travel reel, showing many interesting pictures of the Hot Springs in Arizona, and the beautiful scenery surrounding them.		
A-156	Pathéscope Periodical No. 11	Pathé News
a—World's Champion Log Roller; b—Wonderful New Ditching Machine; c—Young Giraffe for the Bronx Zoo; d—How to Save a Person from Drowning; e—End of Frigate "Franklin"; f—"Gene Yuss" Invents a Boneless Fish.		
A-157	Pathéscope Periodical No. 12	Pathé News
a—All the Sensations of Sea Travel; b—Safety First on a Street Car; c—"Bull-Dogging" Steers; d—A Primitive Southern Farm; e—The Latest in Pets; f—Our Brave Reporter Interviews Gen. Hot Tamale.		
A-158	Pathéscope Periodical No. 13	Pathé News
a—A New Swamp Draining Machine; b—Floating Island; c—Our Navy "Plattsburg"; d—Goat's Milk Industry; e—Locomotive Collision; f—Buds for Hat-trimming.		
A-159	Pathéscope Periodical No. 14	Pathé News
a—An Illustration of the Great Advance in Shipbuilding; b—The Boy Scouts' Rally; c—Porpoise Fishing at Cape Hatteras; d—Contest Between Firemen and Policemen; e—Operation of Barge Canal Locks; f—Slickest Rooster in Samhill County.		
A-164	A Trip by Rail Through the American Rockies	
The spectator is taken through the Rockies on a locomotive, whose evolution is described in the "History of Transportation," and whose manufacture is illustrated in the "Making of an Electric Locomotive."		